



**LIGHTING THE
WAY FORWARD**

2021-2022 Staffing and Tallies

Overview

- Enrollment Projections (Rollover)
- K-4 Overview
- Middle & High School Overview
- Special Education Staffing
- District Overview
- Summary

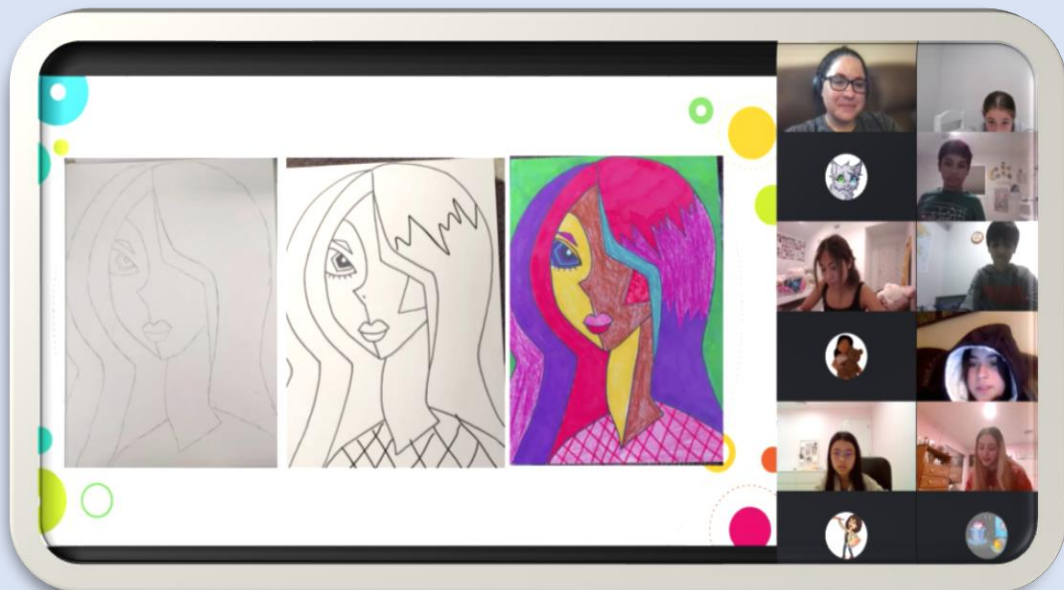


NEXT LEVEL LEADER
ODECA

Hannah Quintin Danielle Wicker Lazar Knoll Melissa Israel

Riley Nathan Bailey Germain Samantha Heseziel

CONGRATULATIONS TO THE 2021 POB DECA MEMBERS CHOSEN FOR THE NEW YORK STATE DECA HONOR SOCIETY

A graphic celebrating the 2021 POB DECA members chosen for the New York State DECA Honor Society. It features seven individual portraits of students arranged in two rows. The top row includes Hannah Quintin, Danielle Wicker, Lazar Knoll, and Melissa Israel. The bottom row includes Riley Nathan, Bailey Germain, and Samantha Heseziel. To the right of the portraits is the 'NEXT LEVEL LEADER ODECA' logo. Below the portraits, a large block of text reads 'CONGRATULATIONS TO THE 2021 POB DECA MEMBERS CHOSEN FOR THE NEW YORK STATE DECA HONOR SOCIETY'.

2020-2021 Projected Enrollment

*BEDS Data October 7, 2020	*Actual 19-20	Projected 20-21	*Actual 20-21
K-12 Enrollment	4969	4947	4975
K-4	1791	1787	1787
5-8	1620	1608	1628
9-12	1558	1552	1560

Data as of March 8, 2021

Enrollment Projections

POB CSD Enrollment Report For 2021-2022

Grade	OBP		J.J. PARKWAY		PASADENA		STRATFORD				TOTALS	TOTALS
	2020-2021	2021-2022	2020-2021	2021-2022	2020-2021	2021-2022	2020-2021	2020-2021	2021-2022	2021-2022	2020-2021	2021-2022
	Enrollment	Enrollment	Enrollment	Enrollment	Enrollment	Enrollment	Enrollment	ABA - SC	Enrollment	ABA - SC	Enrollment	Enrollment
*K	81	72	63	61	64	71	114	11	109	10	333	323
*1	74	81	65	63	75	64	101	11	114	11	326	333
*2	88	74	83	65	97	75	109	10	101	11	387	326
*3	76	88	75	83	91	97	115	9	109	10	366	387
*4	90	76	86	75	108	91	94	8	115	9	386	366
Sum	409	391	372	347	435	398	533	49	548	51	1798	1735

Data as of March 8, 2021

K-4 Projected Enrollment

Elementary BOE Guidelines
 Primary Grades K-2 18-24
 Elementary Grades 3-4 20-28
 Intermediate Grades 5-6 23-28

POB CSD K-4 (Rollover) Enrollment & Sections For 2021-2022

Grade	OLD BETHPAGE			Judy Jacobs PARKWAY			PASADENA			STRATFORD			TOTALS	
	2021-2022			2021-2022			2021-2022			2021-2022			2021-2022	2021-2022
	Enrollment	Sections	Average	Enrollment	Sections	Average	Enrollment	Sections	Average	Enrollment	ABA/SC	Sections	Average	Enrollment
K	72	4	18	61	3	20.33	71	4	17.75	109	10	5	21.8	323
1	81	4	20.25	63	3	21	64	3	21.33	114	11	5	22.8	333
2	74	4	18.5	65	3	21.67	75	4	18.75	101	11	5	20.2	326
3	88	4	22	83	4	20.75	97	4	24.25	109	10	5	21.8	387
4	76	3	25.33	75	3	25	91	4	22.75	115	9	5	23	366
Sum	391	19	20.82	347	16	21.75	398	19	20.97	548	51	25	21.92	1735

K-4 Overview

- Maintains current programs, services and provides flexibility to address potential COVID protocols
- Adheres to Board of Education established class size guidelines
- Maintains faculty & staff
- Staffing:
 - Net neutral general education staffing at Old Bethpage & Stratford Road
 - -1 section at JJP & -3 sections at Pasadena
 - Monitoring Kindergarten, Grades 3 & 4 class sizes, & Stratford Road enrollment
- Special Education: Subject to the outcomes of Annual Reviews
 - Overall net neutral special education staffing
 - Monitoring ICT and ABA needs for incoming Kindergarten
 - Monitoring special class needs at Stratford Road
- Maintains support with XR Program, Reading teachers and Therapist push in

K-4 Overview

Old Bethpage

- K-4 enrollment with 19 projected sections with 4 sections of K-3 grades & 3 sections of grade 4
- Average class size is projected at 20.8 (currently at 21.5)
- ICT sections in grades K- 4

Judy Jacobs Parkway

- K-4 enrollment with 16 projected sections with 3 sections in K, 1, 2, & 4 and 4 sections in grade 3
- Average class size is projected at 21.8 (currently at 22)
- ICT sections in grades 1 & 3

Pasadena

- K-4 enrollment with 19 projected sections with 3 sections in grade 1; and 4 sections in grades K, 2, 3 & 4
- Average class size is projected at 20.9 (currently at 19.9)
- ICT section in grade 4

Stratford Road

- K-4 enrollment with 25 sections with 5 sections in all grades
- Average class size is projected at 21.9 (currently at 22.3)
- ICT sections in grades K &1 and SC sections in grades K-4

Data as of March 8, 2021

Enrollment Projections

GRADE		5	6	7	8	MS Total
POBMS	2020-2021	183	234	208	223	848
	2021-2022	202	183	234	208	827
POBMS Difference		19	-51	26	-15	-21
Mattlin	2020-2021	191	186	197	209	783
	2021-2022	184	191	186	197	758
MMS Difference		-7	5	-11	-12	-25
Total 2020-2021		374	420	405	432	1631
Total 2021-2022		386	374	420	405	1585

GRADE		9	10	11	12	HS Total
POBJFKHS	2020-2021	376	388	382	406	1552
	2021-2022	432	376	388	382	1578
HS Difference		56	-12	6	-24	26

Middle School Overview

*BEDS Day Data		*Actual 2020-2021			Projected 2021-2022		
Grade	School	Enrollment	Sections	Ave Class Size	Enrollment	Sections	Ave Class Size
5	Mattlin	190	8	23.8	184	8	23
6	Mattlin	184	8	23	191	8	23.9
7	Mattlin	195	8	24.4	186	8	23.3
8	Mattlin	209	8	26	197	8	24.6
5	POBMS	182	9	20.2	202	9	22.4
6	POBMS	233	10	23.3	183	8	22.9
7	POBMS	206	9	22.9	234	10	23.4
8	POBMS	228	9	25.3	209	9	23.2

Middle School Overview

POBMS

- Projected enrollment - decrease of 21 students
- Tallies indicate a total change in staffing of (-1.15) in the following areas:
 - -2.0 Elementary Ed.
 - -0.15 Art
 - +0.60 Music
 - +0.2 Social Studies
 - +0.2 World Language

MMS

- Projected enrollment - decrease of 25 students
- Tallies indicate a total change in staffing of (+0.87) in the following areas
 - +0.37 World Language
 - +0.4 Music

High School Overview

- Projected enrollment - increase of 26 students
- Tallies indicate a total change in certified staffing of (-3.4) in the following areas:
 - -0.2 Art
 - -1.3 English
 - -1.2 Social Studies
 - +0.2 World Language
 - +0.1 Technology
 - -1.0 Science
- Tallies indicate a total change in classified staffing of (-1.0) in the following areas:
 - -1.0 Clerical

Special Education Staffing

- *Staffing supports current programs & service needs
- 75.4 staff members (ABA, SC, ICT and RR)
- 2 Behavior Consultants
- 10 Speech teachers
- 5 OT's / PT's
- 13 Psychologists
- 6 Social Workers
- 11 Nurses
- 1 Mental Health Provider

*Pending annual review outcomes

Breakage & Clerical excluded from totals

Districtwide Overview

Subject/Area	OB	JJP	Pasadena	Stratford	MMS	POBMS	POBJFKHS	District Wide	TOTAL
Breakage (3 positions) -								3.00	3.00
Elementary -		-1.00	-3.00			-2.00			-6.00
Elementary Steam									0.00
Discovery Lab									0.00
Math / Instructional Coach									0.00
Math AIS									0.00
K-6 Literacy/Reading									0.00
Art		-0.13	-0.27		0.10	-0.15	-0.20		-0.65
Business									0.00
English							-1.30		-1.30
ENL									0.00
FACS/H&C									0.00
Guidance									0.00
Health									0.00
Industrial Arts/Tech							0.10		0.10
Library									0.00
Math									0.00
Music					0.40	0.60			1.00
Physical Education									0.00
Reading (7-12)									0.00
Science							-1.00		-1.00
Social Studies						0.20	-1.20		-1.00
World Language					0.37	0.20	0.20		0.77
Special Education (ABA/SC/ICT)									0.00
Social Workers									0.00
Psychologists									0.00
Speech									0.00
Nurse									0.00
Clerical								-1.00	-1.00
Total	0.00	-1.13	-3.27	0.00	0.87	-1.15	-3.40	0.00	-8.083

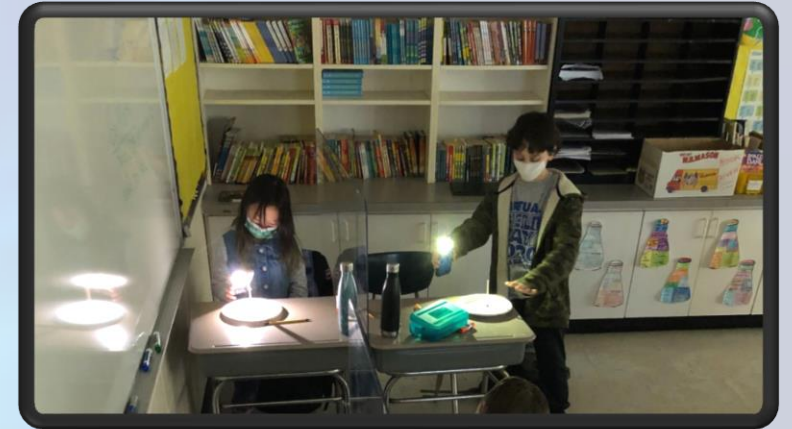
Summary

- This staffing will maintain Board guidelines for class size, addresses equitable services, and preserves the level of services/programs being provided while remaining under the tax cap.
- The staffing presented will allow the district to pivot and address potential COVID related needs.
- Our 2021-2022 budget is driven by student requests and enrollment tallies.

Plainview - Old Bethpage Staffing & Tallies Report



Questions



**LIGHTING THE
WAY FORWARD**

Vote!

When and Where?

Tuesday, May 18, 2021

6am – 9pm

- *Jamaica Avenue School*
- *Mattlin Middle School-Administration Offices*

www.pobschools.org *for more information*



A Smart Investment Thank You!

