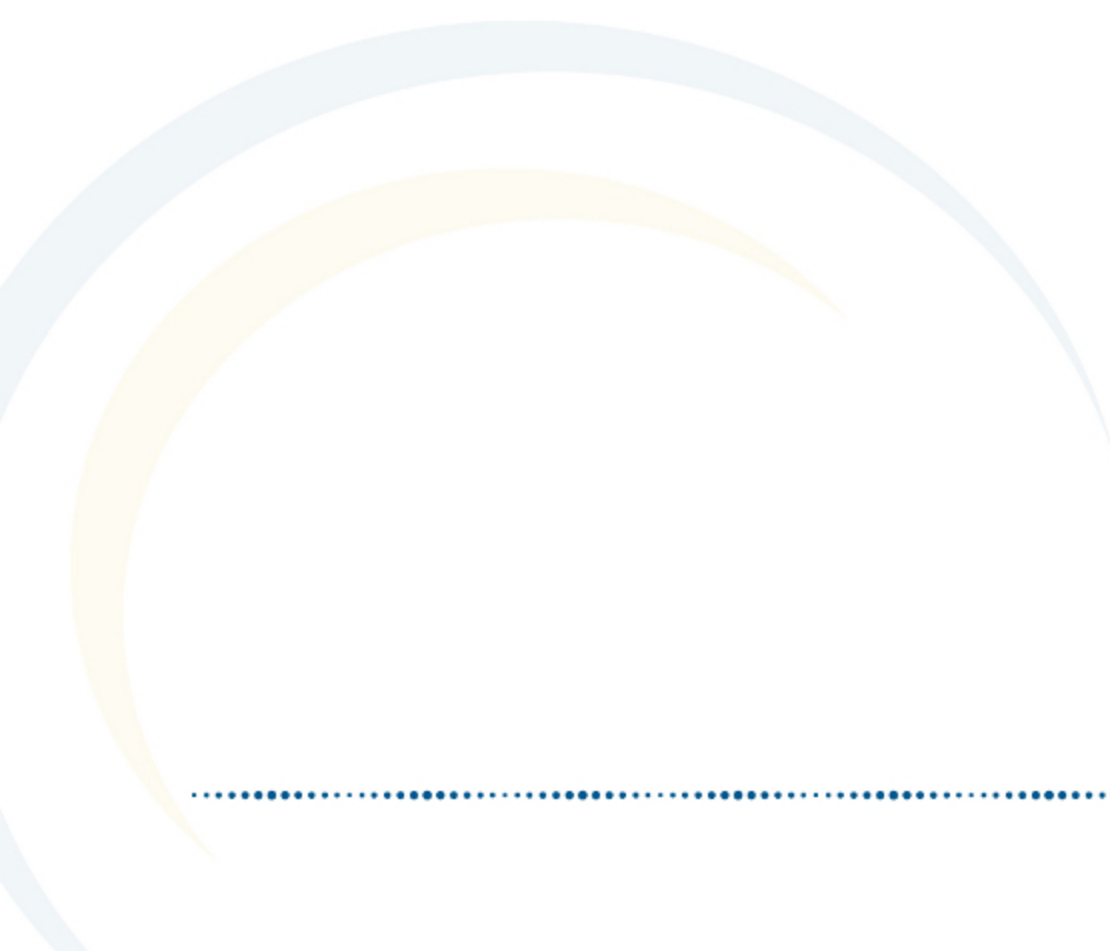


Supported Platforms

August 2012



This document is intended for restricted use only.

Infinite Campus asserts that this document contains proprietary information that would give our competitors undue advantage should they come into possession of any part or all of it. As such, this document cannot be publicly disclosed unless so ordered by a court of competent jurisdiction.

©2012 Infinite Campus, Inc. All rights reserved.

INFINITE CAMPUS and Transforming K12 Education are registered trademarks of Infinite Campus, Inc. The INFINITE CAMPUS logo is a trademark of Infinite Campus, Inc. This publication, or any part thereof, may not be reproduced or transmitted in any form or any means, electronic or mechanical, including photocopying, recording, storage in an information retrieval system, or otherwise, by anyone other than Infinite Campus, Inc. without written permission of Infinite Campus, Inc., 4321 109th Avenue NE, Blaine, MN 55449, tel. (651) 631-0000, email info@infinitecampus.com.

Supported Platforms

[Overview](#) | [Changes in Supported Platforms](#) | [Platform Minimums](#) | [Minimum Supported Browser/OS Combinations](#) | [Mobile and Tablet Browsers](#) | [Supported DBMS and Application Servers](#) | [Supported Platforms for Campus Premium Products](#) | [Point of Sale Terminal Minimums](#) | [Properly Opening FDF Files when Using Safari 5.1+ on Mac OS X 10.6+](#)

Overview

This page contains information on the platforms generally supported for use with Infinite Campus software.

✔ **Infinite Campus is currently supporting releases on the E.x (enhancement) and 2013M.x (maintenance) lines.** For more information on the release cycle or for release notes on product updates, please refer to the [Release Information](#) area.

Changes in Supported Platforms

Notable changes in platform support are summarized in the following tables. Please refer to additional sections of this page for more information.

Current Changes

Item	Change	Details	Effective Date
Campus Release Lines	Support added	2013M (maintenance release line)	April 2012
	Support retired	2012M (maintenance release line)	June 2012 <i>(2012M.x end-of-life)</i>

Anticipated Changes

Item	Anticipated Change	Details	Anticipated Effective Date
Database Server	Support retiring	SQL Server 2005	June 2012 <i>(2012M.x end-of-life)</i>

Platform Minimums

The following table indicates the minimum operating requirements and recommendations for use with Infinite Campus software:

ℹ Oracle has issued a security notification for Java plugins below 1.6.0_31 or between 1.7.0 and 1.7.0_2. This security issue may cause users working within Firefox to receive a Java Plugin error. Users are highly encouraged to update their Java Plugin to the most current version. For more information, see the [Oracle notification](#). To update your Java Plugin, [go here](#).

Platform	Supported Minimums		Recommended Minimums		
	Windows	Macintosh	Windows		Macintosh
Operating System	XP	OS X 10.5.x	Vista	7	OS X 10.6.x
Processor	P4	G4	1 GHz 32-bit	1 GHz 32/64-bit	Intel
RAM	512	512	1 GB	1 GB (with 32-bit) 2 GB (with 64-bit)	1 GB
Java Plug-in	Java 1.5	Java 1.4.2	Java 1.5	Java 1.5	Java 1.5
Internet Browsers	Please refer to the Supported Browser/OS Combinations section.				
Adobe Flash	Adobe Flash Player 10.X or higher is required for use of the Data Analysis tool and the Online Payments (Portal) premium product on all Campus-supported platforms.				
Adobe Reader	Infinite Campus does not support the use of Adobe Reader on platforms that are not supported by the third-party product vendors. Note to Macintosh Users: <ul style="list-style-type: none"> • FDFs do not work for users on OS X 10.6+ using Safari 5.1+ unless Adobe Reader is updated to 10.1.3 or higher. • Firefox use is not supported. Please use Preview. • Camino use is not supported. 				

Minimum Supported Browser/OS Combinations

The following table displays supported combinations of operating systems and browsers for general use of Infinite Campus software. Only versions of the browser equal to or greater than the versions listed in the table are supported.

 Please see the [Recommended Browser Settings](#) for more information on browser configurations.

OS /Browser	IE 7.0	Firefox 4.0.x	Safari 5.x
Windows			
XP	E.x 2013M.x	E.x 2013M.x	
Vista	E.x 2013M.x	E.x 2013M.x	
7	E.x 2013M.x	E.x 2013M.x	
Mac OS X			
10.5.0 (Intel) 10.5.5		E.x 2013M.x	E.x 2013M.x
10.6.x		E.x 2013M.x	E.x 2013M.x
10.7.x		E.x 2013M.x	E.x 2013M.x

Mobile and Tablet Browsers


General mobile and tablet browsing is available on devices capable of HTML. Functionality available will vary depending on the device’s specific capabilities, but usually includes basic student contact information, student schedules, posted grades, teacher attendance, behavior, transportation and Portal access. Some devices may show additional features.

⊖ Due to the numerous inconsistencies between mobile and tablet operating systems, devices and browsers, Infinite Campus cannot guarantee comprehensive support for mobile and tablet browsing.

Campus Mobile Portal is an iOS and Android application available with the **E.1138 Release Pack** and will work on iOS (Apple) devices and Android devices (NOT BlackBerry or Windows-based mobile phones). The following devices are supported:

Device	Minimum Operating System
Android	2.2 and later
iPod Touch	4.2.1 <i>Second generation and newer</i>
iPhone 3G	4.2.1

iPhone 3GS	4.2.1+
iPhone 4	4.2.1+
iPad	4.2.1+
iPad 2	4.2.1+

 First generation of iPhone and iPod Touch is not supported.

Supported DBMS and Application Servers

This section indicates the versions of Database Management Systems (DBMS) and application servers supported for general use of Infinite Campus software.

Application Server	SQL Server 2005 (64-bit) Compatibility 90	SQL Server 2008 (64-bit) Compatibility 100
Apache Tomcat v. 6.0 with Java 1.6 (32/64-bit)	E.x 2013M.x	E.x 2013M.x

Supported Platforms for Campus Premium Products

This section contains requirements for Campus Premium Product add-on features that may not apply to all users.

Campus Premium Product	Supported Platform / Minimum Requirements	Campus Version
POS Terminals using Windows OS (POSReady 2009)	See the Point of Sale Terminal Minimums Section below.	E.x 2013M.x NOTE: Elo terminals require Campus version .1126 or higher.
Online Payments (Portal)	Adobe Flash Player 10.1	E.x 2013M.x
Finance and Human Resources	Adobe Flash Player 10.1	E.x

Point of Sale Terminal Minimums

The following table indicates the minimum operating requirements and recommendations for use of Campus Food Service on Point of Sale terminals:

i Campus does not support Campus Food Service running on Macintosh-based terminals at this time. All terminals must be PC based. Also, Windows Vista and Windows 7 are not currently supported on terminals used for Campus Food Service.

	Supported Minimums <i>Issues encountered while operating at levels below those listed in these columns will NOT be supported.</i>	Recommended Minimums <i>Though lower levels may be supported, Infinite Campus recommends that users operate at or above the levels listed in these columns.</i>
Operating System	XP Professional SP3 (or POSReady 2009)	Windows XP Professional SP3 (or POSReady 2009)
Processor	Intel Celeron D 64-bit @ 2.53 GHz (Single Core)	Intel Celeron E1500 64-bit @ 2.2 GHz (Dual-Core)
RAM	512MB DDR2	1GB DDR2
HHD	80GB 7200RPM SATA-300	160GB 7200RPM SATA-300
Network Connection	10/100 full duplex wired or 802.11g wireless	10/100 full duplex wired
Java Plug-in	Java 1.5.0_06	Java 1.5.0_06
Internet Browsers	Please refer to the Supported Browser/OS Combinations section.	
Adobe Reader	Infinite Campus does not support the use of Adobe Reader on platforms that are not supported by the third-party product vendors.	

Properly Opening FDF Files when Using Safari 5.1+ on Mac OS X 10.6+

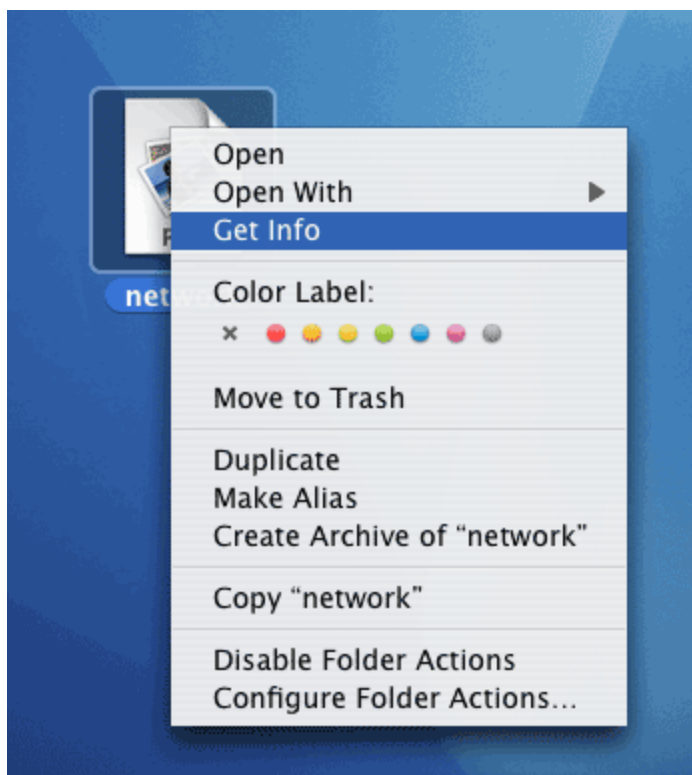
! Adobe has issued an update for Adobe Reader and Acrobat X which corrects PDF and FDF issues found within Safari 5.1+ and OS X 10.6+. Users are highly encouraged to update to Adobe Reader and/or Acrobat X 10.1.3.

For more information about this update, [click here](#). To download Adobe Reader 10.1.3, [click here](#).

For users who need to open FDF files within Safari 5.1 while running on OS X 10.6+ and are not able to update Adobe Reader and/or Acrobat to 10.1.3, the following workaround must be performed.

Step 1.

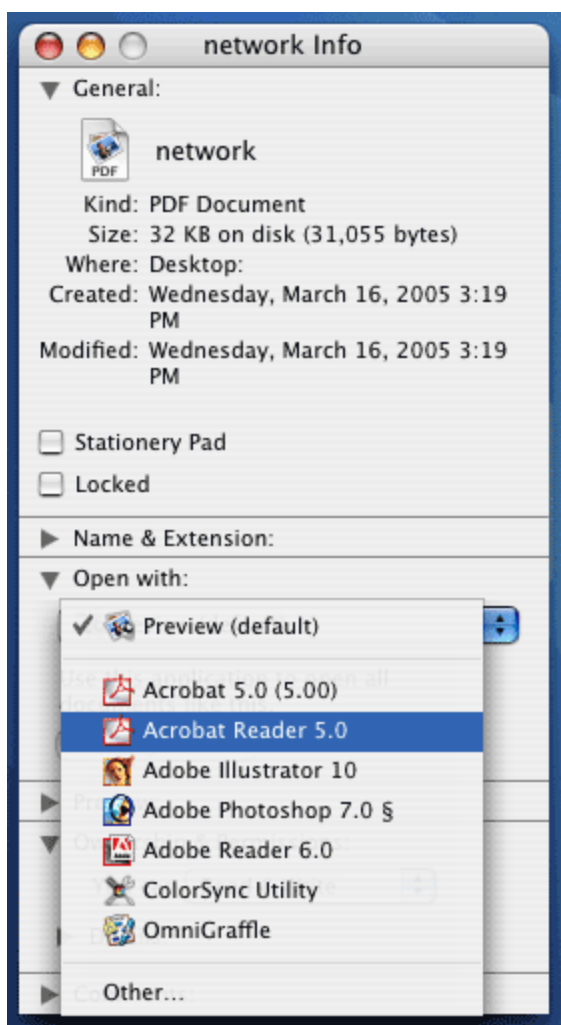
Single-click the FDF file you wish to open (outside of Campus) while holding the **Control** key. From the File menu, select **Get Info** (or select the file and press **Command - I**). See the image below.



Step 2.

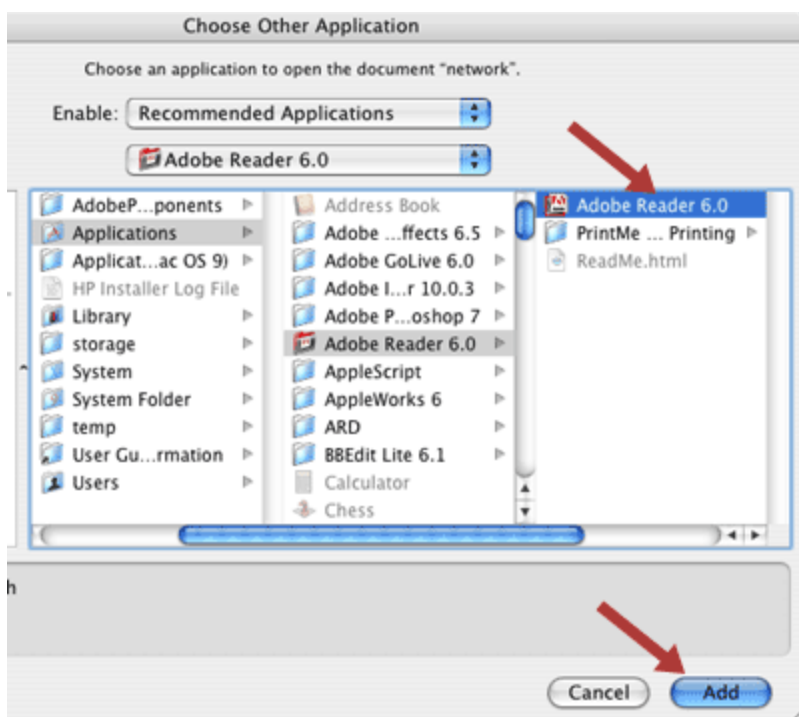
In the Info window, click the triangle next to **Open with:** to expand the dropdown list. From the **Open with:** dropdown list, select **Acrobat Reader** (see image below). Skip to Step 4.

If Acrobat Reader is not listed or the version listed is not the most up-to-date version installed on the computer, select **Other...** within the **Open with:** dropdown list and proceed to Step 3.



Step 3.

Once **Other...** is selected from the **Open with:** dropdown list, navigate through the Applications folder and locate the icon for the Adobe Reader application. Select the Adobe Reader application so that it highlights in blue and click the **Add** button (see the image below).



Step 4.

Within the Info window, click the **Change All...** button so that all subsequent PDF and FDF files will automatically open within Adobe Acrobat Reader instead of within the web browser (see image below). A confirmation message will appear, requiring you to click **Continue** in order to complete changes made.

