



MEET THE COUNSELOR NIGHT

October 2023

GUIDANCE COUNSELOR VS. SCHOOL COUNSELOR

GUIDANCE COUNSELOR

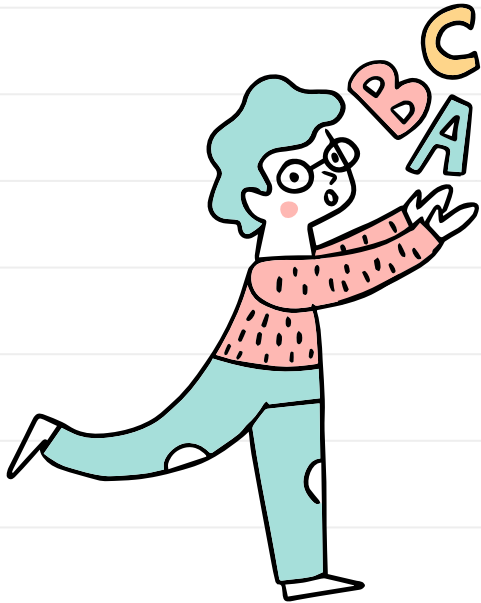
- SERVICE TO SOME
- ANCILLARY ROLE TO SCHOOL IMPROVEMENT PROCESS
- WORK IN ISOLATION
- REACTIVE

SCHOOL COUNSELOR

- PROACTIVE/DATA-DRIVEN
- PROGRAM FOR ALL
- ESSENTIAL ROLE IN SCHOOL IMPROVEMENT PROCESS
- IMPACT MEASURED VIA ACHIEVEMENT, ATTENDANCE AND BEHAVIOR DATA



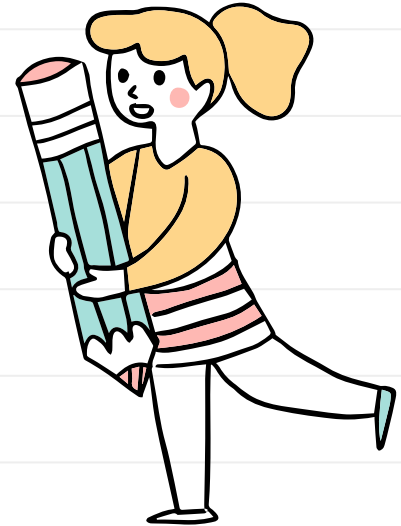
WE HELP OUR STUDENTS



-APPLY ACADEMIC ACHIEVEMENT STRATEGIES

-MANAGE EMOTIONS AND APPLY INTERPERSONAL SKILLS

-PLAN FOR POSTSECONDARY OPTIONS (COLLEGE AND CAREER READINESS)



OUR ROLE

- **BUILDING RELATIONSHIP WITH STUDENTS**
 - **STUDENT SELF-ADVOCACY AND RESILIENCY SKILLS**
 - **FOSTER STUDENT INDEPENDENCE**
 - **PRACTICE CONFIDENTIALITY**
 - **WORK IN COLLABORATION: TEACHERS, ADMINISTRATION, SOCIAL WORKERS, PSYCHOLOGISTS, MTSS, CSE**
 - **ASSIST WITH SCHEDULE PLANNING**

RESOURCES

NEWSLETTER/ WEBSITE

Coming December
2023!

www.pobschools.org

PARENT SQUARE

Be sure to check
regularly

SOCIAL MEDIA

X:

@POBGuidance

Instagram:

@POBJFK_Guidance



Chain of Communication

Students

We encourage ALL students to express their questions and concerns directly to their teacher and/or guidance counselor or social worker.

Parents

If you are concerned about an issue involving your child's education, experience, or teacher; go directly to the teacher.

Contacting the Teacher

Teachers are available to communicate with students and parents. You can call the school building of your child between the hours of 7:30 am and 4:00 pm, and leave a detailed message for the teacher indicating times in which you can be reached. You can also email your child's teacher with any questions or concerns you may have.

Contacting the Guidance Counselor or Social Worker

If your concerns stem from your child's social/emotional well-being, or the progress in a particular class, please contact the school guidance counselor and/or social worker. These professionals are available between the hours of 7:30 am and 4:00 pm.

In the event that additional clarification is necessary, or if you have not heard back from the teacher within 48 hours (Monday-Friday) by way of phone or email, please use the following chain of communication for further assistance.

ELEMENTARY SCHOOLS

School Building Assistant Principals

If your concerns stem from your child's social/emotional well-being, progress, behavior, class assignment or grades, please contact the school building Assistant Principal.

MIDDLE SCHOOLS & HIGH SCHOOL

School Building Assistant Principals

If your concerns stem from your child's behavior, participation in school, absences, or disciplinary issues, please contact the school building Assistant Principal.

Curriculum Chairs/Directors

If your concerns stem from a classroom practice, grade, or a particular book or assignment, please contact the administrator who oversees the curricular area in question.

Building Principals

Most problems will have been resolved by this point. If you still need to speak with someone about the situation, however, please contact the school building Principal.

All calls to the Principal or Assistant Principals are maintained in a telephone log.

Assistant Superintendents

If your problem has not been resolved through the Principal's office, please contact the appropriate Assistant Superintendent.

- Assistant Superintendent for Business
- Assistant Superintendent for Human Resources
- Assistant Superintendent for Curriculum and Instruction
- Assistant to the Superintendent for Safety and Transportation

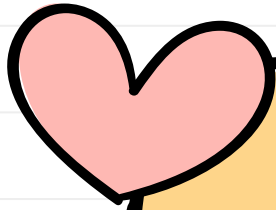
Superintendent of Schools

If your problem has not been resolved through the Assistant Superintendent's offices, please contact the Superintendent of Schools.

Board of Education

If your problem has not been resolved by speaking with the Superintendent of Schools, please contact the Board of Education through the District Clerk.

**FOUND IN DISTRICT
CALENDAR**



QUESTIONS?

Thank you for joining us!

